

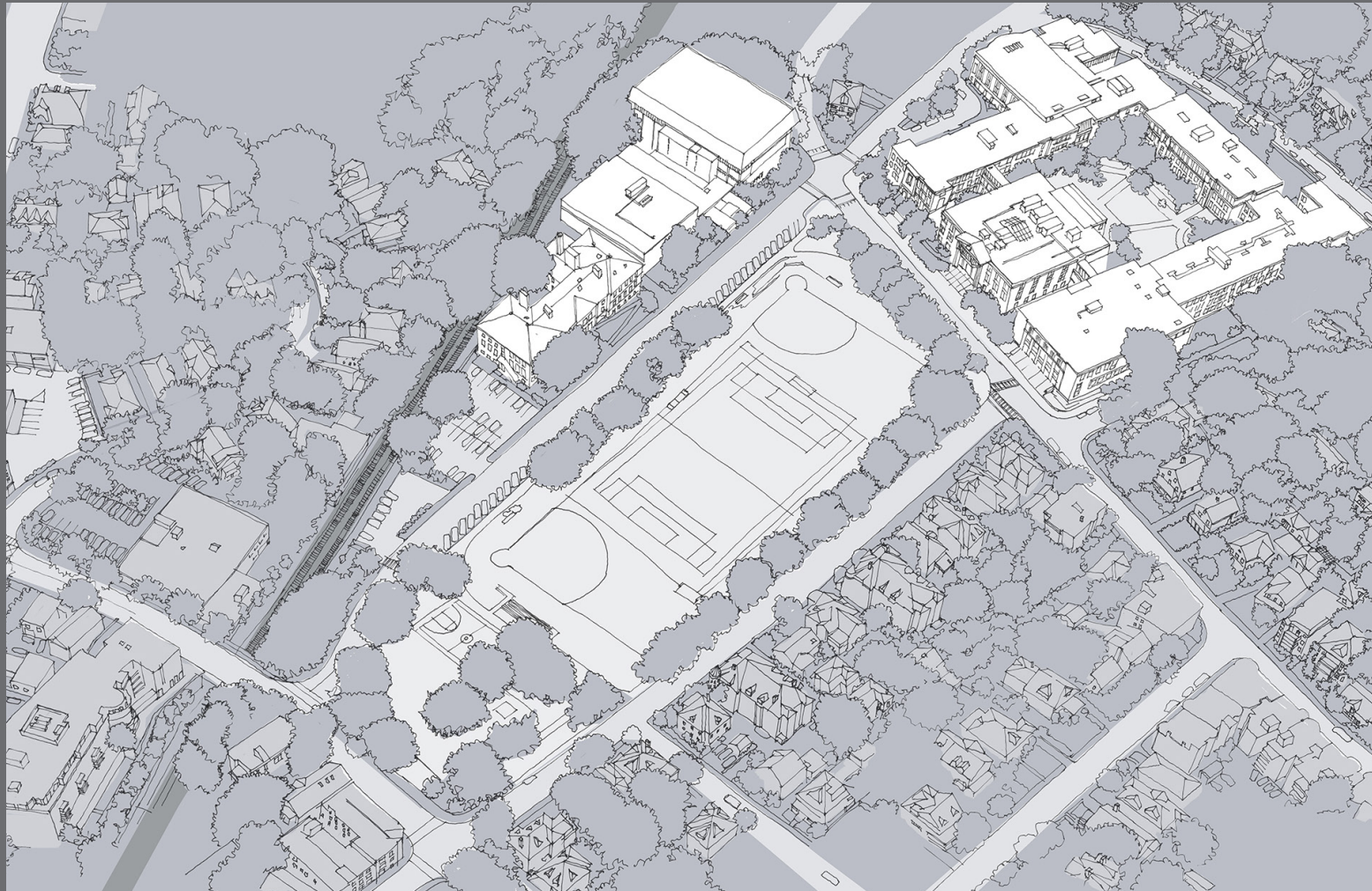


Brookline High School  
Building Committee

Brookline High School  
Campus Expansion Update

Feasibility Study

MAY 3, 2017



HMFH ARCHITECTS

130 Bishop Allen Drive, Cambridge, MA 02139 617 492 2200 [hmfh.com](http://hmfh.com)

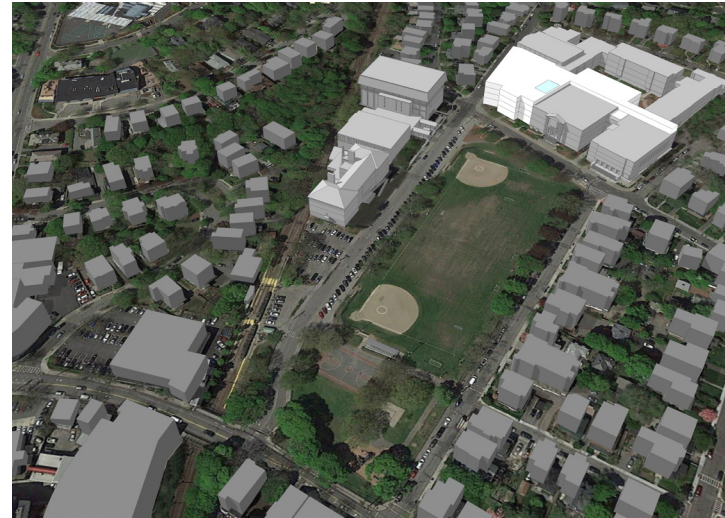


# Option 1, 2 & 3

## Summary and Cost

3 May 2017

### Option 1



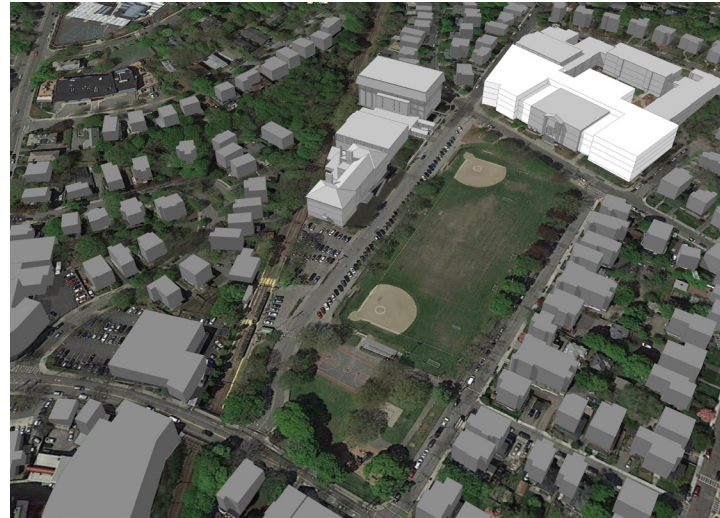
Existing to Remain at BHS  
294,310 sf

New Construction at BHS  
165,000 sf

---

Project Cost  
**\$181,572,560**

### Option 2



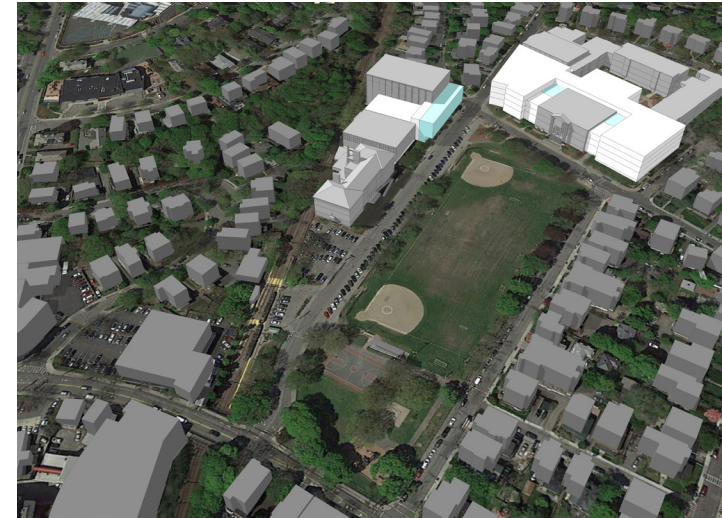
Existing to Remain at BHS  
242,280 sf

New Construction at BHS  
228,690 sf

---

Project Cost  
**\$212,261,728**

### Option 2 with Tappan



Existing to Remain at BHS  
242,280 sf

New Construction at BHS  
228,690 sf

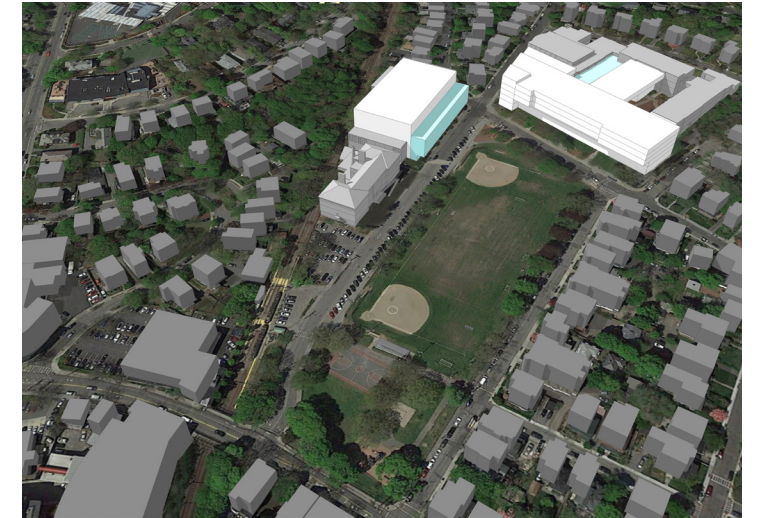
Renovation at Tappan Gym  
60,330 sf

New Construction at Tappan Gym  
49,300 sf

---

Project Cost  
**\$271,178,244**

### Option 3



Existing to Remain at BHS  
181,050 sf

New Construction at BHS  
298,130 sf

Renovation at Tappan Gym  
60,130 sf

New Construction at Tappan Gym  
64,050 sf

---

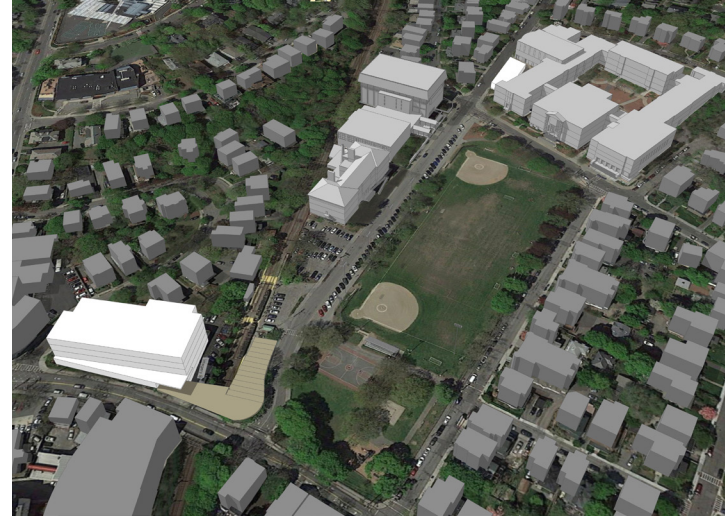
Project Cost  
**\$348,352,647**

# Option 4

## Summary and Cost

3 May 2017

### Option 4A



Renovate Existing BHS  
Science  
**35,500 sf**

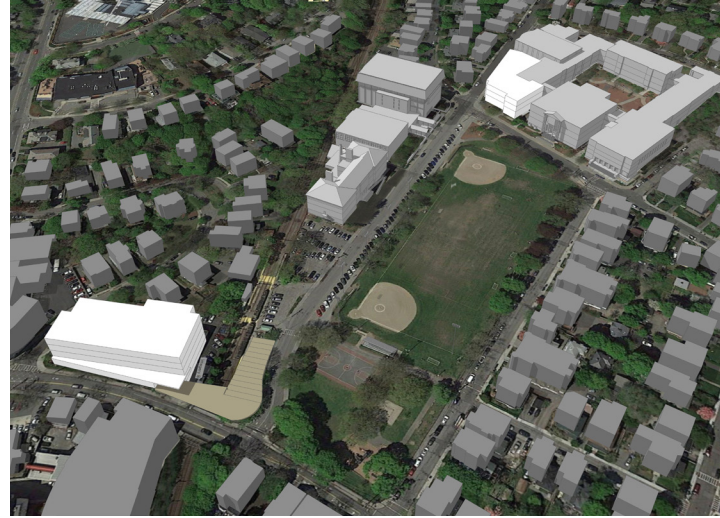
New Construction at BHS  
**7,500 sf**

New Construction  
Cypress Building  
**109,810 sf**

---

Project Cost  
**\$105,342,903**

### Option 4B



Renovate Existing BHS  
Science into Classrooms  
**36,500 sf**

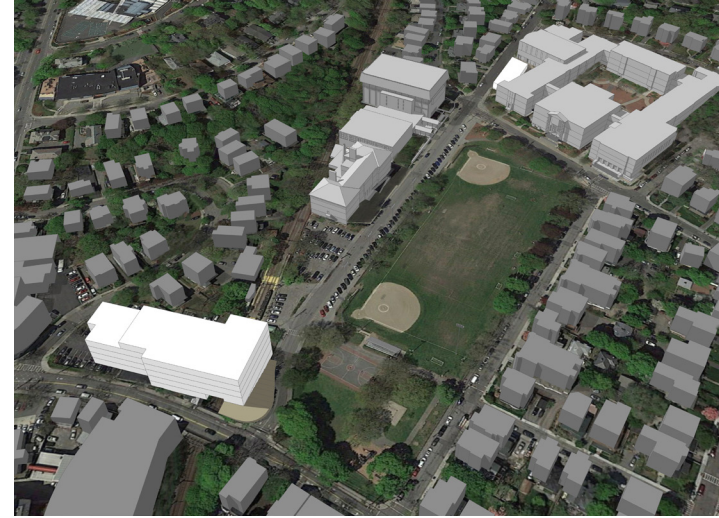
New Construction at BHS  
**44,100 sf**

New Construction  
Cypress Building  
**109,810 sf**

---

Project Cost  
**\$131,117,378**

### Option 4C



Renovate Existing BHS  
Science  
**35,500 sf**

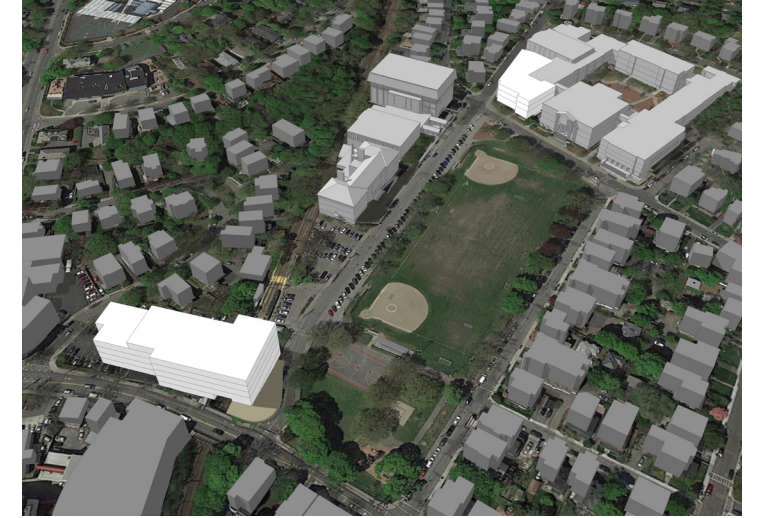
New Construction at BHS  
**7,500 sf**

New Construction Cypress  
Building over the MBTA  
**112,700 sf**

---

Project Cost  
**\$110,838,332**

### Option 4D



Renovate Existing BHS  
Science into Classrooms  
**36,500 sf**

New Construction at BHS  
**50,400 sf**

New Construction Cypress  
Building over the MBTA  
**112,700 sf**

---

Project Cost  
**\$136,612,807**



## Tappan Gym Upgrades

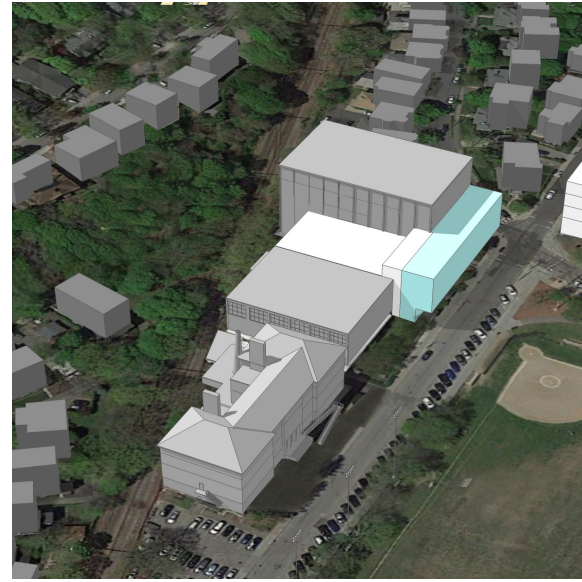
### 1. Minimal Renovations



---

Project Cost  
**\$13,290,000**

### 2. Moderate Expansion with Competition & Practice Gym

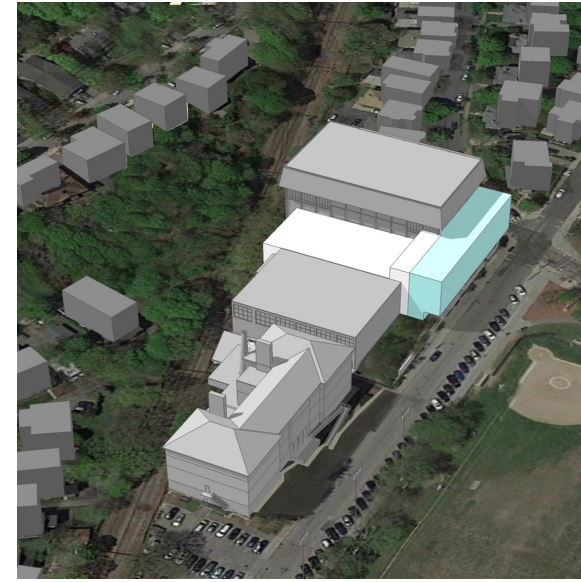


---

Project Cost  
**\$62,266,000**

Note: Option 2. Tappan Gym Moderate Expansion is included in the program, planning for the BHS OPTION 2. State High School Standards. Costs have been summarized both with and without this Tappan Gym Upgrade

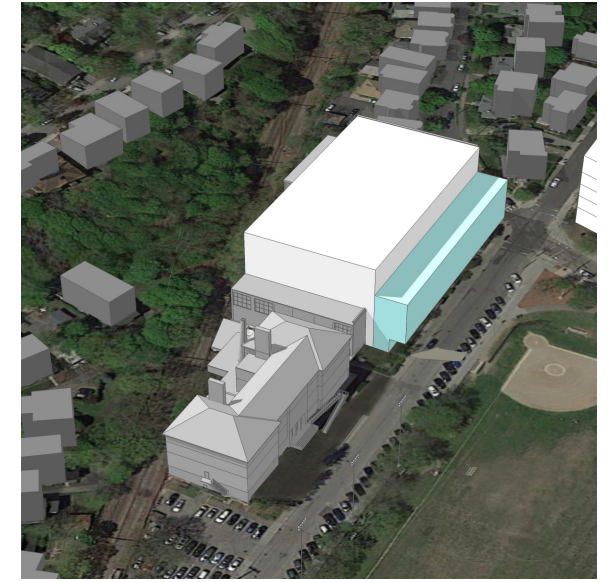
### 2.1 Min.Moderate Expansion with Practice Gym only



---

Project Cost  
**\$52,706,000**

### 3. Education Plan with Field House



---

Project Cost  
**\$74,000,000**

Note: Option 3. Tappan Education Plan with Field House is included in the program, planning, and costs for the BHS OPTION 3. Education Plan



# OPTIONAL PROJECTS

## Cypress Park Field & Playground

### 1. Field & Playground Renovation



Project Cost  
**\$13,335,500**

### 2. Field & Playground Renovation with Greenough St. Re-alignment



Project Cost  
**\$14,638,500**

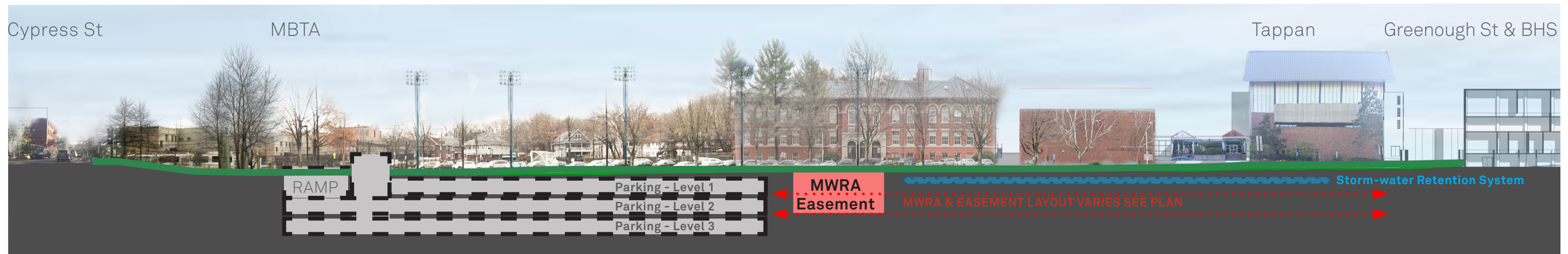
## Underground Parking

### 1. Typical Plan for Parking below Cypress Park



Project Cost

- 1-Level 100 cars = \$21,051,500
- 2-Levels 200 cars = \$33,769,600
- 3-Levels 300 cars = \$46,806,000



Site Section: Underground Parking Structure Below Cypress Park - Field @ +/- 100 Cars per Level



# PRELIMINARY CAMPUS STUDY AREA

